

DELO® 400 XLE SAE 10W-30

Product Information Sheet



Delo® 400 XLE SAE 10W-30 with ISOSYN® ADVANCED TECHNOLOGY is a premium synthetic blend engine oil designed for fuel economy and mixed fleet engines. It is recommended for naturally aspirated and turbocharged four-stroke diesel engines and four-stroke gasoline engines where API CK-4 or SN service categories and SAE 10W-30 are recommended.



ISOSYN ADVANCED TECHNOLOGY benefits customers by helping to provide:

- Up to 35% improved oil oxidation control*
- Up to 69% improved wear protection*
- Up to 46% improved piston deposit control*

*Results will vary based on the Delo 400 product, operating conditions, and engine types. Always follow OEM recommendations and utilize used oil analysis testing when extending oil drain intervals. Improvement relative to industry standard engine test limits.

APPLICATIONS:

- Engineered for on-highway diesel engines including 2017 greenhouse gas (GHG 17) compliant diesel engines with lower CO₂ emissions, and 2010 compliant low emission diesel engines with Selective Catalytic Reduction (SCR), Diesel Particulate Filter (DPF) and Exhaust Gas Recirculation (EGR) systems.
- Most modern off highway engines where an SAE 10W-30 viscosity grade is recommended including those adapted for the most stringent emissions standards in construction, agriculture, marine, and mining applications.
- Excellent performance in Auxiliary Power Units (APUs) found on trailer refrigeration (refer) units or on truck tractors to help reduce main engine idle.

SPECIFICATIONS and OEM CLAIMS:

- | | | |
|--|-----------------------|----------------------|
| • API Service Categories
CK-4, CJ-4, CI-4
PLUS, SN | • DDC DFS 93K222 | • MB-Approval 228.31 |
| • ACEA E9 / E6 | • DEUTZ DQC III-10 LA | • MTU Category 2.1 |
| • Caterpillar ECF-3 | • JASO DH-2 | • Renault RLD-4 |
| • Cummins CES 20086 | • Mack EOS 4.5 | • Volvo VDS-4.5 |
| | • MB-Approval 228.51 | |



Up to 28% longer drain intervals versus API CJ-4**

**Based on results from Volvo field testing program compared to maximum drain interval for Volvo D13 engines with VDS-4 Products



Delo®
Let's go further.®

550,000+ MILES, MAX LOADS

In this field trial, Delo® 400 XLE SAE 10W-30 delivered the reliability Hoge needs for the long haul.

Hoge Motor Company is an over the road flatbed hauler located out of Shelbyville, TN. They haul aluminum rolls to beverage can producers throughout the Southeastern United States and uptime and on-time deliveries are critical to operating profitably in their business. Any truck downtime or delay can cause their customer to shut down their production line costing significant losses in profitability and productivity. **“Truck operational reliability is everything to us, we have to meet our customers schedules for just in time inventory deliveries or we don’t get paid,” says Tommy Hoge, President.**

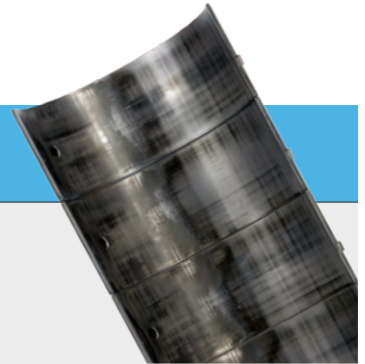


Hoge Motor Company has to continually look for improvement in operations to help maintain and reduce costs for their customers as part of their agreements to haul for them. Tommy Hoge was interested in seeing if he could help reduce his fuel costs while improving vehicle reliability by moving from an SAE 15W-40 to an SAE 10W-30. Tommy chose to move his fleet to Delo 400 XLE SAE 10W-30 to help gain both efficiency and reliability from the new generation API CK-4 oil.

After 550,000+ miles Tommy wanted to look at how well his key engine components were being protected. A full engine teardown was conducted at their local OE dealer on one of their Mack MP 8 engines and the results were impressive – the key engine components were well protected and showed limited wear and excellent cleanliness.

Connecting Rod Bearings

Connecting Rod Bearings are in excellent condition showing minimal wear



Pistons

Pistons are very clean with no visible deposit buildup on the crown land or ring land area



Main Bearings

Bearings are in very good condition with no copper underlay visible



ChevronDelo.com

A **Chevron** company product

© 2018 Chevron U.S.A. Inc. All rights reserved. All trademarks are property of Chevron Intellectual Property LLC or their respective owners. The manufacturers identified above did not participate in the field trials.



rvjensen.com

Delo®

Let's go further.®